

Enhancing the Event Experience Through Cleanliness



ABOUT US

Proud cleaning partners of sports & entertainment facilities nationwide

Our footprint is national in scope

PSEG, an integral member of the Pritchard Industries family of companies since 1997, is a distinguished full-service provider specializing in the comprehensive maintenance and cleanliness of diverse sporting and entertainment venues. Irrespective of the magnitude or complexity of the undertaking, our dedicated team encompasses a wide range of expertise essential for delivering exceptional cleaning solutions.

With a proven track record of quality services, we earned a well-deserved reputation as a trusted and preferred partner. We have Established strong relationships with clientele over the years managing professional sports facilities, major entertainment venues and events nationwide, delivering unparalleled cleaning and support services, and meeting the unique requirements of their facilities.



SERVICES

We are a **100% venue** focused, **full-service** cleaning provider

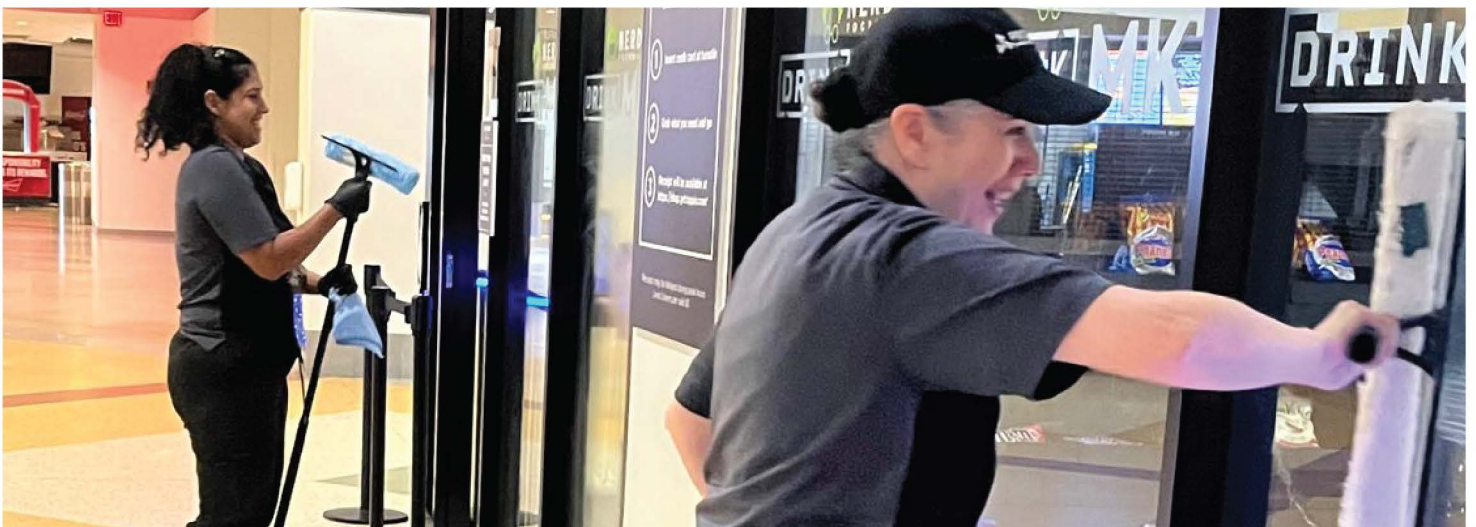
DAY-CORE CLEANING

365 Days your facility will be work and event ready

24/7 Facility Care

With our expert team of day-to-day cleaners, state-of-the-art equipment, and unrivaled attention to detail, we provide the best choice for maintaining the cleanliness and prestige of your facility. From meticulous cleaning schedules to swift response times, we ensure your venue is always work and event-ready, surpassing industry standards and leaving a lasting impression on visitors, fans, and guests.

[Learn more](#)



EVENT CLEANING

1000 + Smoothly run events per month

3-5 Min Response time during events

Our pre-event preparations and during-event cleaning services are tailored exclusively for sports and entertainment venues. With our dedicated team and innovative approach, we deliver a seamless and efficient cleaning experience that exceeds industry standards. From quick response times to discreet and non-disruptive cleaning methods, we ensure smoothly run events while maintaining impeccable cleanliness.

[Learn more](#)



POST - EVENT CLEANING

1K -100K

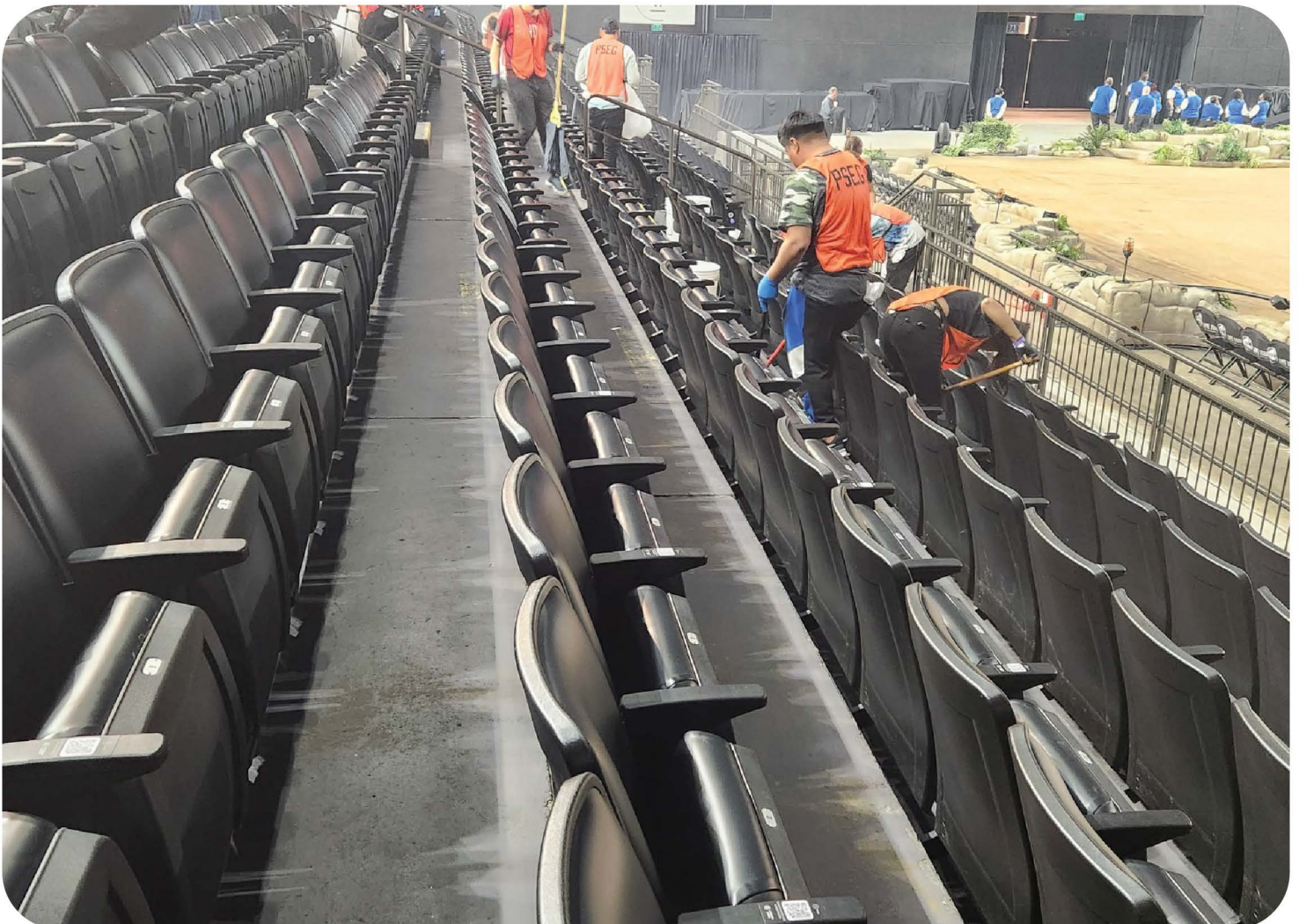
No matter the capacity, we'll keep it clean!

1K +

Post-cleanups per month

Our post-event cleaning services are tailored exclusively for efficient and quick turnaround. Our experienced team of managers, supervisors, and cleaners, equipped with state-of-the-art equipment, proven cleaning strategies, innovative methodologies, and a rigorous quality assurance program, ensures a swift and thorough cleaning process throughout your facility. In addition, with our commitment to punctuality, we start and end on time, allowing you to transition to the next event seamlessly without any delays.

[Learn more](#)



CHANGEOVERS

50% of our accounts require our changeover services

2-4 Hrs to remove chairs from arena floor after a concert

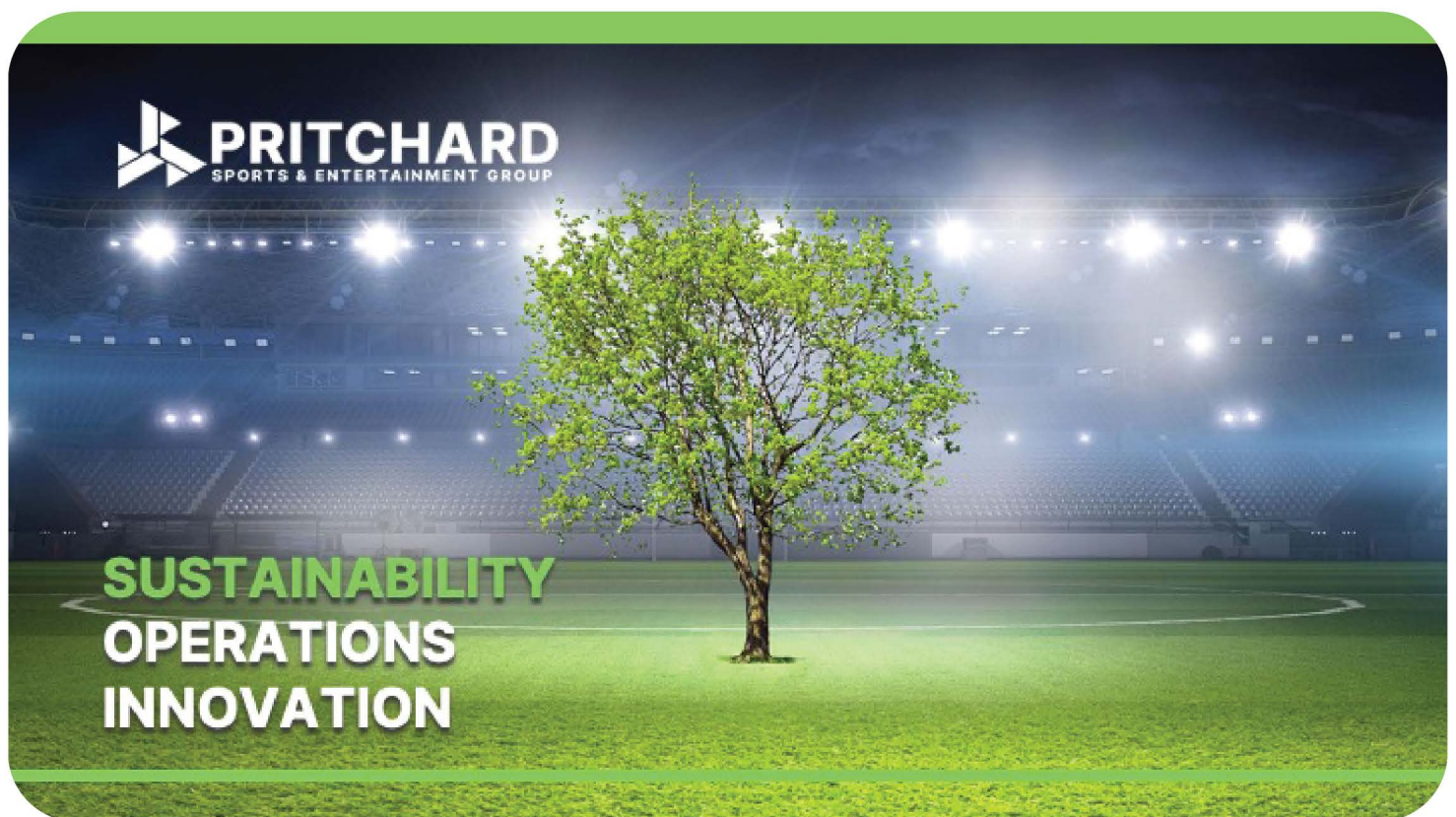
We deliver conversion services to almost a quarter of our facilities. We focus on meticulous planning and logistics to consistently provide high-quality conversions. Understanding the importance of seamless execution and teamwork, we offer a comprehensive, full-service facility-wide event setup, conversion, and restore operation. Our skilled crew will be available as needed, providing complete event setup and additional labor throughout the entire event process based on the direction of the authorized facility representative team and customer requests.

[Learn more](#)



We **craft and execute** effective **sustainability** programs

We play a vital role in maintaining green certification standards for our clients' facilities nationwide. By leveraging our expertise, experience, and knowledge, we design tailored sustainability programs that align seamlessly with each client's goals, policies and procedures.



PROJECTS

Providing you with **additional support** for project work

PROJECT WORK

Pre-Season Clean



Pressure Washing



Window Cleaning



Carpet Care



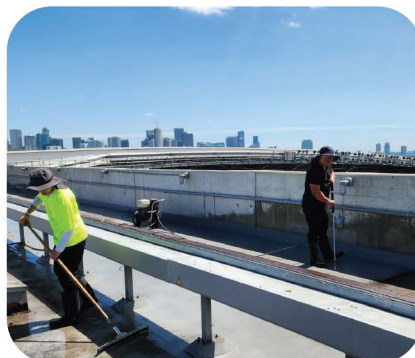
Floor Care



Construction Cleanup



Emergency Recovery



OUR COMPANY

PSEG by the **numbers**

27

Years of experience in the sports & entertainment venue cleaning industry.

8 Hrs

Our average nightly turn around time at most of our venues after the end of a large event.

15K

Our companywide employee network.

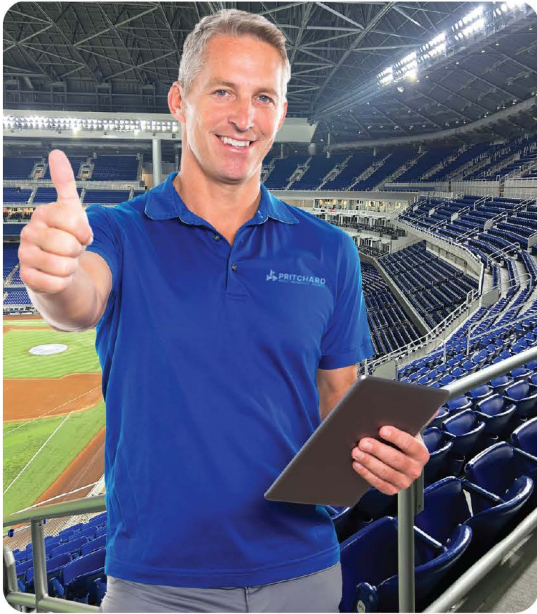
100K +

Events collectively overseen by our Executive Team.



Consistent service through **accountability** and **reliability**

Ensuring Unmatched Results through our Quality Assurance and Control Programs



At PSEG, we prioritize top-tier cleanliness and performance for your facility with our comprehensive Quality Assurance (QA) and Quality Control (QC) programs. Our approach is built around the QA 3-Pass System and regular QC Inspections to consistently deliver excellence.

QA 3-Pass System

To ensure immaculate results, we utilize our 3-Pass System, guaranteeing each area is inspected three times before the final client walkthrough:

First Pass: The Cleaner thoroughly cleans the designated area.

Second Pass: The Supervisor reviews the area alongside the Cleaner to approve the work.

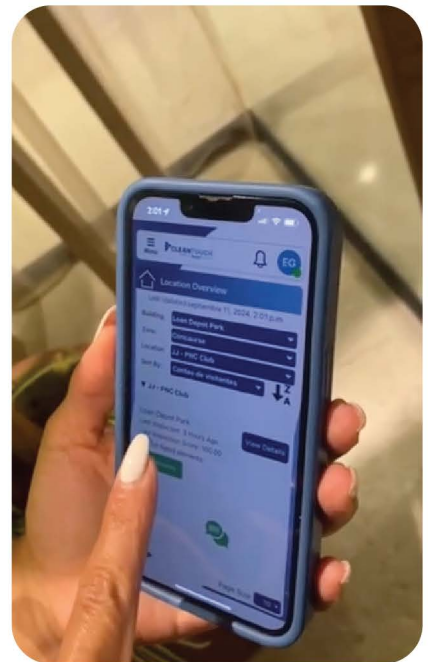
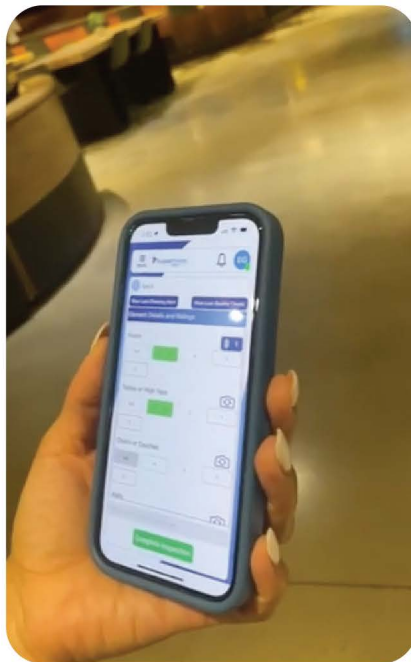
Third Pass: The Supervisor and Manager conduct a final review together before presenting it to the client.

After these three inspections, both the Supervisor and the Manager sign off on the final checklist. The area is then formally handed over to the client for their inspection.

Inspections Powered by Trax Analytics

Our experienced quality control team routinely inspects every area of your facility to maintain the highest cleanliness standards. Utilizing the Clean Touch app, powered by Trax Analytics, we conduct detailed inspections using checklists that evaluate, rate, and record each area's cleanliness and overall appearance.

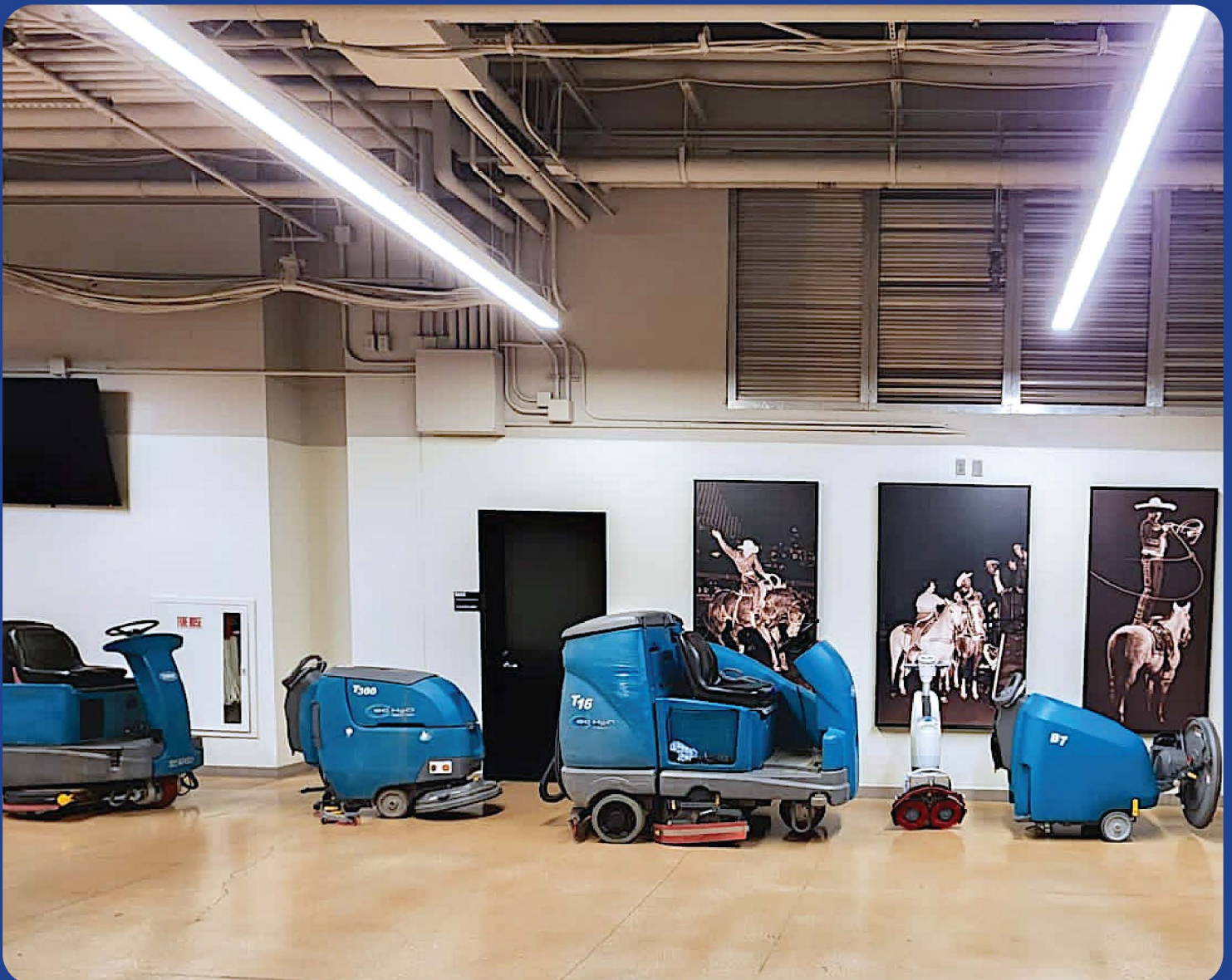
Should any discrepancies or areas requiring extra attention be identified, our team promptly addresses them to guarantee your venue meets and exceeds expectations.



PURCHASING

Maximizing **value** through **national purchasing** power

We take pride in leveraging our national volume to benefit your facility. By utilizing our substantial purchasing power, we consistently reduce equipment and consumable costs without adding unnecessary markups. Our commitment to providing cost-effective solutions is just one of the many ways we enhance the value of our service.





2130 Priest Bridge Dr. Suite 9
Crofton, MD 21114
410.451.8448

pritchardsports.com